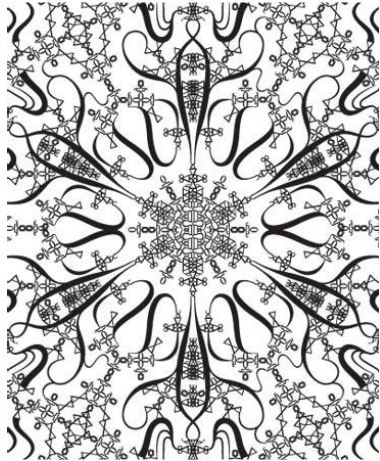


### SYMMETRY

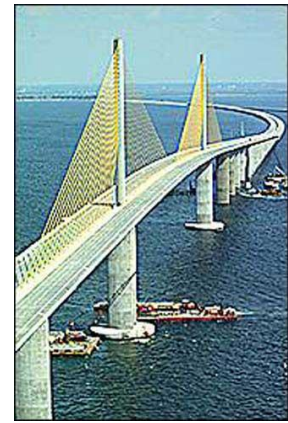


### LOADS

Live Load  
(Train on a Bridge)



### BRIDGE TYPES



Cable-stayed Bridge

### INTERNAL FORCES

Pyramid Compression



### STRUCTURAL SHAPES



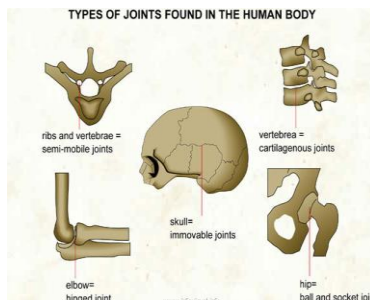
### STRUCTURAL COMPONENTS



### STRUCTURAL MATERIALS



### JOINTS



### SAFETY and STRENGTH

